

## INTERNATIONAL SOLING CLASS 2021 WORLD CHAMPIONSHIP NOTICE OF RACE

### THE SOLING WORLD CHAMPIONSHIP 2021

will take place at Milwaukee Yacht Club, Milwaukee, Wisconsin, USA from September 13 to  
September 19, 2021  
Notice of Race

#### ORGANISING AUTHORITY

The organising authority is the International Soling Class (ISA) in conjunction with the National Authority, the United States Soling Association (USSA) in conjunction with the Milwaukee Yacht Club.

#### 1 RULES

- 1.1 The regatta will be governed by the rules as defined in The Racing Rules of Sailing.
- 1.2 The prescriptions of the United States National Authority (US Sailing) will not apply
- 1.3 The ISA Championship Rules will apply.
- 1.4 The following racing rules will be changed: 28.1, 31, 32, 33, 35, 42.3(c), 44.1, 60.1(a), 62.2, A4, and Race Signals AP and S. The changes will appear in full in the Sailing Instructions.
- 1.5 [NP][DP] COVID-19 Operational Protocol for the return to the official national, non-professional competitions (2020-2021 Season), available on the regatta web site.
- 1.6 Amendments to any of the rules applying to the regatta must be approved and signed by the ISA Liaison Officer appointed for the event before publishing or posting.
- 1.7 In all rules governing this regatta:
  - 1.7.1 [NP] denotes that a breach of this rule will not be grounds for a protest by a boat. This changes RRS 60.1(a)
  - 1.7.2 [SP] denotes a rule for which a standard penalty may be applied by the race committee or Technical Committee without a hearing, or a discretionary penalty applied by the International Jury with a hearing. This changes RRS 61.1 and A5.
- 1.7 If there is a conflict between languages the English text will take precedence

#### 2 [NP][DP] ADVERTISING

Boats may be required to display advertising chosen and supplied by the organising authority. If this rule is broken, World Sailing Regulation 20.9.2 applies [DP].

#### 3 ELIGIBILITY AND ENTRY

- 3.1 The regatta is open to all yachts of the International Soling Class as prescribed in Championship Rule 4 – Eligibility.
- 3.2 ISA Membership is obligatory for all crew members. Membership fees will be collected from any crew member failing to present proof of previously paid membership fee.
- 3.3 It is also required that all yachts entering display the ISA sticker for the current year. An additional amount will be collected from the helmsperson or representative of any yacht not displaying the ISA sticker of the current year at the appropriate position.
- 3.4 Eligible boats may enter by completing the entry forms on the event website [www.solingWorlds.com](http://www.solingWorlds.com) no later than September 1<sup>st</sup> of 2021 and completing registration and payment of all fees, late entries will be at discretion of the OA.
- 3.5 For the purposes of RRS "Appendix A", Scoring: A boat is not considered an entry until:
  - (a) All fees are paid,
  - (b) Measurement (if requested) is completed and
  - (c) The boat has completed on site registration.

#### 4 CLASSIFICATIONS

No classification requirements are applied

#### 5 FEES & REGISTRATION

- 5.1 The pre-registration online is required at <https://www.soling.com/worlds/2021/entry.asp>. The entry fee will be used \$650 and may be paid online at: [https://www.regattanetwork.com/clubmgmt/applet\\_registration\\_form.php?regatta\\_id=22945](https://www.regattanetwork.com/clubmgmt/applet_registration_form.php?regatta_id=22945) before September 1<sup>st</sup> of 2021. The entry fee includes the ISA Championship fee of €75 and unlimited Crane in/out, Mooring, Trailer parking, Opening, Social and Closing ceremony).
- 5.2 Registration is completed after payments are effective and registration forms are signed at the registration office.
- 5.3 The Entry Fee is non-refundable, except if the regatta is cancelled by the Organising Authority.
- 5.4 Teams eligible for the young helm prize according to the Championship Rules are entitled to a 50% discount in the entry fee and championship fee for the event (USD \$375).
- 5.5 It is mandatory to have read the information documents on the rules to be respected during the race. It is mandatory to fill the competition health questionnaire online and the other COVID-19 documents will be found in the registration area on the event website. After September 1<sup>st</sup>, 2021, in the event that a participant has not been able to complete their documentation and for this reason their registration is not valid and is cancelled after having paid, they will not have the right to the refund of the registration.
- 5.6 In case of cancellation of the event due to a Covid-19 US or World Government decision, the registration fee will be fully refunded. Claims or refunds for travel and accommodation expenses paid by registered participants due to this type of cancellation will not be accepted. The participant claims to know this fact.
- 5.7 In the event that a registered participant or coach/team leader/support person cannot attend the competition for medical reasons due to a decision of their region or country that affects mobility or travel to Milwaukee, the organization will refund the amount paid as entry fee.

#### 6 QUALIFYING SERIES AND FINAL SERIES

There will be no qualifying series or final series

#### 7 SCHEDULE

- 7.1 Registration: The Race Office at Milwaukee Yacht Club (MYC) will be open for registration from *September 13<sup>th</sup> to 14<sup>th</sup>, 2021 from 1300hs to 1700hs.*
- 7.2 Inspection / Measurement:  
Inspection and Measurement will take place at MYC facilities on *September 13<sup>th</sup> and 14<sup>th</sup> of 2021 from 1300hs to 1800hs*
- 7.3 Dates of Racing:

Date	Races
September 15 <sup>th</sup> of 2021	races 1 & 2
September 16 <sup>th</sup> of 2021	races 3 & 4
September 17 <sup>th</sup> of 2021	races 5 & 6
September 18 <sup>th</sup> of 2021	races 7 & 8
September 19 <sup>th</sup> of 2021	Races 9 & 10
- 7.4 On September 15<sup>th</sup> the first warning signal will be at 1100hs, the following racing days the first warning signal of the day will be announced at the Notice board.
- 7.5 There will be no warning signal on the last racing day (September 19th) after 14:30hs

#### 8 MEASUREMENT

Boats will be measured in accordance with ISA Championship Rule 7.0

For a boat to be eligible to race, her valid (the original or a copy of the original) Measurement Form shall be presented at the Race Office, and the helmsperson or the person in charge (RRS 46) must have satisfied all measurement and registration requirements as specified in this Notice of Race including the submission (at the completion of measurement) of properly completed measurement work sheets. Boats not entitled to ByPass measurement should notify the OA and class administration in advance to allocate a measurement spot. If the Measurement Form cannot be produced before the first race, RRS 78.2 will be applied.

#### 9 SAILING INSTRUCTIONS



The Sailing Instructions will only be published online at [www.solingworlds.com](http://www.solingworlds.com) not later than one month prior to the first start.

There will be no paper version available at the venue.

## **10 VENUE AND COURSE AREA**

10.1 The regatta will be hosted at Milwaukee Yacht Club, Milwaukee, Wisconsin, USA.

10.2 A chart showing the course area is shown below.

## **11 THE COURSES**

Standard ISA Championship courses will be used.

## **12 PENALTY SYSTEM**

12.1 RRS 44.1 is changed so that the Two-turns Penalty is replaced by a One-turn Penalty

12.2 An International Jury will be appointed in accordance with RRS Appendix N. Their decisions will be final and not subject to appeal in accordance with RRS 70.5.

## **13 SCORING**

13.1 The Low Points Scoring System of RRS A4 will apply.

13.2 10 races are scheduled of which 5 must be completed to constitute a valid championship.

13.3 a) When fewer than 6 races have been completed, a boat's series score will be the total of her race scores.

b) When 6 or more races have been completed, a boat's series score will be the total of her race scores excluding her worst score.

## **14 [NP][DP] COACH AND SUPPORT BOATS**

14.1 All support boats shall be registered with the Organising Authority and will be required to comply with local legislation and event Support Team Regulations that will be published in the Sailing Instructions. The Organising Authority may refuse registrations and accept later registrations at their sole discretion.

14.2 Coach and support boats shall show a valid (and for the racing area suitable) third-party liability insurance with a minimum cover of \$300,000 (US) per incident or the equivalent.

14.3 Registered support boats shall act as rescue boats in case of need.

14.4 All Coach and Support Boat drivers must have safety kill-cords or similar safety devices connected/activated when the engine is running.

14.5 All coach and support crew shall wear personal floating devices at all times being afloat, except briefly while changing or adjusting clothing or personal equipment.

## **15 [DP] BERTHING**

Boats shall be kept in their assigned berthing places while in the harbour or boat parks.

## **16 [DP] HAUL-OUT RESTRICTIONS**

Boats shall not be hauled out during the regatta or with and according to the terms of written permission by the Race Committee.

## **17 [DP] DIVING EQUIPMENT AND PLASTIC POOLS**

Underwater breathing apparatus and plastic pools or their equivalent shall not be used around keelboats between the preparatory signal of the first race and the end of the regatta.

## **18 COMMUNICATIONS**

18.1 Except in an emergency, a boat that is racing shall not make voice or data transmissions and shall not receive voice or data communication that is not available to all boats. [DP]

18.2 All boats are required to carry on board fully charged and with the free Kwindoo application installed and running during racing. If no mobile is available at the boat the Kwindoo staff should provide with one. This modifies Class Rules C.3.1(b.1). [DP].

18.3 The boats requested by the organizing authority are required to carry onboard cameras, or sound equipment provided by the OA. [DP].

## **19 PRIZES**

- *Daily first place prizes for each race*



- Prizes for 1st, 2nd and 3rd at the event will be awarded, according to the Championship Rules, these prizes must be for each members of the team in equal sizes.
- The World Championship Trophy
- Paul Elvstrom Trophy - donated by La Cercle de Voile de Paris and awarded to the best placed helmsperson aged 35 years or under on the first scheduled day of racing and the aggregate ages of the crew of three must be 120 or under..
- Tony Clare Trophy - donated by Tony Clare (ISA President from 1999 - 2002) and awarded to the highest placed woman and her team.
- Geert Bakker Trophy - donated by Geert Bakker (ISA President from 1976 - 1979) and awarded to a sailor from the host nation (nominated by the host nation - see end of Championship Rules for Terms of Reference).
- KC1 Classic Trophy - donated by the ISA and awarded to the highest placed boat built before January 1st of 1980.
- Jose Lucio Glomb Trophy - donated by Jose Lucio Glomb(BRA) and awarded to the highest placed South American boat.
- Grand Master Bowl - donated by Stuart Walker(USA) and awarded to the best placed grand Masters. (Helmsperson age 65or higher and the aggregate ages of the crew 150 see Deed of gift below)

## 20 PRIVACY POLICY

Reference is made to data protection of personal information and data. Any personal information and data given to the organizers will be used only as follows:

- 20.1 All data regarding participating athletes, coaches and their boats will be processed and archived for the purpose of this sporting event and Class Association management.
- 20.2 Personal information contains the participant's real name, date of birth, email, home club, boat number and address data. In particular, results, calculations and visual analyses, position monitoring and race analyses will be published with reference to the Sail numbers
- 20.3 In order to achieve this, the data is collected through [www.soling.com](http://www.soling.com) and transferred to our governing bodies like World Sailing, Class Associations and USSA. It cannot be ruled out, that your data will be processed outside of the US. Our service providers and governing bodies have been or will be committed by us, to exclusively use your data for the event and its preparation and post processing, including ranking lists and global multi event scorecards.
- 20.4 The commercial use of your data is prohibited.

## 21 DISCLAIMER OF LIABILITY

- 21.1 The responsibility for the decision to participate in a race or to continue with it is solely with the skipper (person in charge RRS 46); to that extent the skipper also accepts full responsibility for the crew. The skipper is responsible for the qualification and the correct nautical conduct of the crew as well as for the suitability and the transport-safe-condition of the registered boat. In cases of force majeure or on grounds of administrative orders or for safety reasons, the organizer is entitled to make changes in the realization of the event or to cancel the event. This does not constitute any liability by the organizer towards the participant, if the reasons for the changes or the cancellation do not result from a wilful or grossly negligent behaviour of the organizer. In case of a violation of obligations that do not constitute primary or material contractual duties (cardinal obligations), the liability of the organizer for financial and property damages incurred by the participant during or in connection with the participation in the event and resulting from a conduct of the organizer, its representatives, servants or agents, is restricted to damages that were caused wilfully or grossly negligent. When a violation of cardinal obligations occurs due to minor negligence, the liability of the organizer is limited to foreseeable, typical damages. To the extent that the liability for damages of the organizer is excluded or restricted, the participant also relieves the staff employees and representatives, agents, servants, sponsors and individuals who provide or drive salvage, safety or rescue vessels or assist with their use from the individual liability for damages, as well as also all other individuals who were instructed to act in connection with the realization of the event. The effective racing rules of World Sailing, the Class Rules & Championship Rules as well as the regulations of the invitation to the competition and the sailing instructions are to be complied with and are expressly recognized.



21.2 All participants shall sign the disclaimer of liability and copyright at registration.

**22 INSURANCE**

Each participating boat shall show a valid and for the racing area suitable third-party liability insurance with a minimum cover of \$300,000 per incident or the equivalent in the competitor's currency.

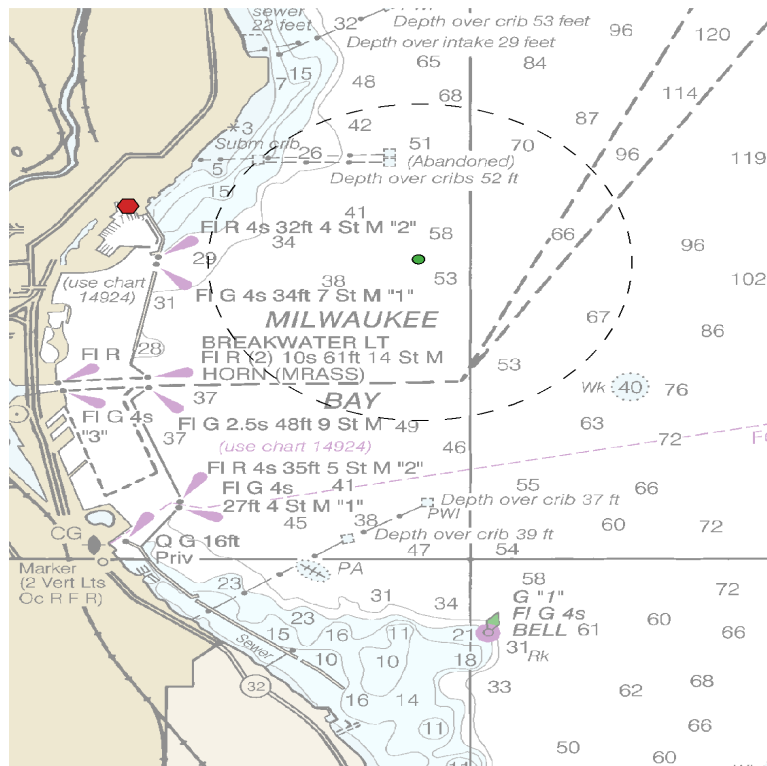
**23 FURTHER INFORMATION**

For further information please contact or visit: [www.solingWorlds.com](http://www.solingWorlds.com) The Soling World

**ATTACHMENT 1**

Chart showing the course areas in relation to the host club.

Milwaukee Yacht Club Racing Area, MYC Gathering Mark, appx. 1.5 KM East of North Gap



1700 N. Lincoln Memorial Dr. Milwaukee, WI 53202  
Phone.- +1 (414) 271-4455  
Email.- [pam@milwaukeeeyc.com](mailto:pam@milwaukeeeyc.com)